



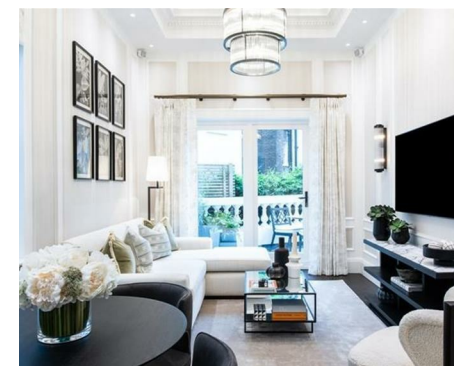
Let **UK** Home

2 Bedrooms

Flat

Located in London

£11,613 Per Month



info@letukhome.co.uk

<https://www.letukhome.co.uk/>

01795 358 886



Prince Of Wales Terrace London

W8 5PQ



Let UK Home are delighted to offer a newly refurbished exceptional two-bedroom, 867 sq. ft apartment arranged across the Courtyard and Ground Floor levels of a boutique super prime building.

The apartment is fully furnished & interior designed to the highest of specification. The apartment boasts two terraces on each level; one accessed via the reception room and the other via the bedrooms.

The hand-built kitchen features bespoke Calcutta marble from Italy and is equipped with Miele appliances Oven, warming drawer, microwave, induction hob, wine cooler, and dishwasher.

The reception room and kitchen are open-plan, featuring paneled walls, a chandelier, and an ornate up-lighting coffer-covered ceiling. Dual-aspect doors open out to the private terrace.

The primary bedroom has a range of built-in wardrobes, a full marble ensuite bathroom with underfloor heating, mirror-fronted cabinet units with integrated demister, and a door leading to the private courtyard. The second bedroom also offers a range of built-in wardrobes and an ensuite marble shower room.

The apartment further benefits from WIFI, Samsung smart TVs with Sonos soundbars, comfort cooling, kitchen pack provided to all tenancies.

On-street parking is available via a paid permit.

Prince Of Wales Terrace London

£11,613 Per Month

- Ground Floor
- CCTV | Lifts
- Available furnished or unfurnished
- Great transport links
- On-street parking is available via a paid permit.
- Broadband
- Digital TV | Comfort Cooling
- Interior Designed | Two private terraces
- Personalised services for tenants
- EPC Rating: B





Let **UK** Home

3F 2 Eastbourne Terrace
 Paddington
 London
 W2 6LG

01795 358 886

info@letukhome.co.uk



Council Tax Band: G

Local Authority:

Agents Note: Whilst every care has been taken to prepare these particulars, they are for guidance purposes only. All measurements are approximate and are for general guidance purposes only and whilst every care has been taken to ensure their accuracy, they should not be relied upon and potential buyers/tenants are advised to recheck the measurements.

| Energy Efficiency Rating | | Current | Potential |
|---|-------------------------|---------|-----------|
| Very energy efficient - lower running costs | | | |
| (92 plus) A | | | |
| (81-91) B | | 81 | 81 |
| (69-80) C | | | |
| (55-68) D | | | |
| (39-54) E | | | |
| (21-38) F | | | |
| (1-20) G | | | |
| Not energy efficient - higher running costs | | | |
| England & Wales | EU Directive 2002/91/EC | | |

<https://www.letukhome.co.uk/>